



SHBURY TECH CO.,LTD

- THE ONE OF LEADERS OF CUSTOM
- FABRICATION INDUSTRY

2023 VERSION

/ CONTENTS

ABOUT US

BUINESS SCOPE

SERVICE & ENGINEERING

APPLICATION AREA

PLANT & PRODUCT SHOW

EQUIPMENTS



PART ONE

ABOUT US

ABOUT US



ESTABLISHED IN 2014

Shbury was established in 2014, after about 10 years development ,it has grown up to be one of the highly reputable supplier in terms of the service of CNC precision machining, Sheet metal and plastic injection molds.

BEING BASED IN SHENZHEN CITY

Being based in South China, ShenZhen city – the engine room of China precision manufacturing - means that all of our resources are easily accessible. Equipped with over 25 sets of CNC machines, 10 laser cutting machines, 5 bending machines, and several sets EDM, grinding machines, injection machines and so on.

TEAM TO SUPPORT OVERSEA BUSINESS

To a great extent ,Shbury took advantage of business opportunities to expanding business scope for enterprise further development, and re-positioning company objective for the future .Up to now ,Shbury has dedicated team to support oversea business in terms of business development ,engineering support and continuous improvement to guarantee better schedule and quality delivered .

ABOUT US



●
Founded in 2014
ISO9001:2008
4000m² plant area

●
Over 50 employee
10 years experiences
The one of leaders of custom fabrication industry

SHBURY MISSION



Rapid manufacture what you want



PART TWO

**BUINESS
SCOPE**

— BUSINESS SCOPE

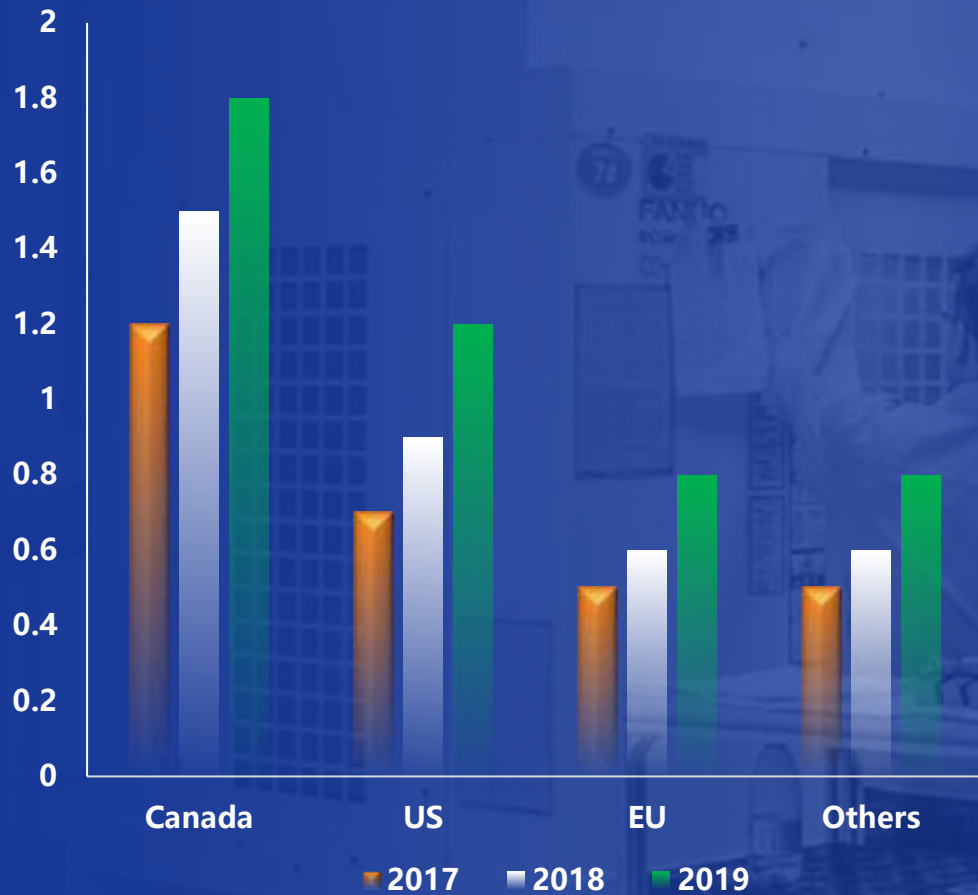


Shbury is fully dedicated in oversea business and serve many of great clients around the world . Customers are from US , Canada EU(UK / Germany / France/ Poland / Czech Republic) , Australia , Asia (India ,Singapore) and so on .

And business proportion for Shbury global business :



BUINESS SCOPE



01

Base on the data indication from below Bar Chart . Generally speaking , Shbury got considerable success in Canada, US & EU markets . With stabilizing Aisa and other markets .

01

Indeed , after targeting Canada and US markets with inputting more resource for development , Shbury has brought company business to a new horizon , and will continue to make breakthrough with paying more effort on major markets ,especially Canada market.



PART THREE

**SERVICE &
ENGINEERING**

SERVICE & ENGINEERING.

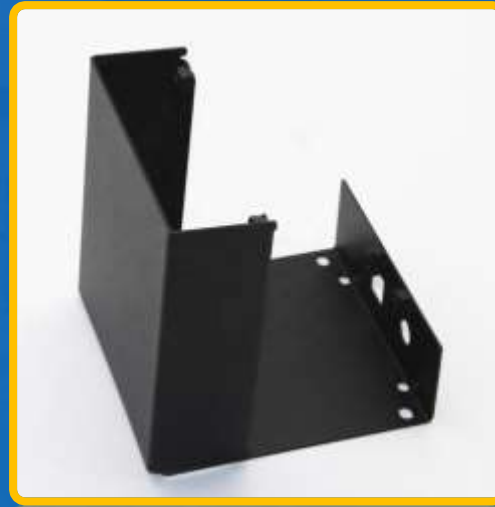


01



CNC machining production

02



Sheet metal production

03



Plastic injection molds
& injection molding

From R&D to manufacturing, one-stop service on the custom fabrication industry

APPLICATION AREA



Automobile



Heater housing, Tail Lamp, Storage box, class window frame, center console, Glove box, Fender, front grill and more

Medical Appliances



Medical cap, Medical equipment housing and more

Industrial Equipment



Metal and plastic gear, Lawn mower, Bend pipe, Spray gun, printer parts and more

electronic parts



Mobile phone housing, headset housing, electronics parts housing

Others



washing machine, water heater, washer parts, trash can and more

CNC MACHINING PRODUCTION CASES SHARING



This is an order from a customer in the United States, and the part requires 100K pieces.

The most important thing is that the part has strict tolerance requirements, with the highest tolerance requirement reaching $\pm 0.005\text{mm}$.

33 dimensions on the part need to be inspected. Shbury's used CNC turning, grinding, and honing processes has passed the customer's requirements. At the same time, Shbury's production capacity has also reached 30K per month, completing orders within three months and meeting customer delivery deadlines



CNC MACHINING PRODUCTION CASES SHARING



This is a project from Canada, and the parts are used for a monitor marine ecosystems. The material of this project is C18000, which is an imported copper for China and the material is very expensive.

And the product finally needs to be composed of three semi circular products working together, so the requirement for concentricity is very high, and the entire product reaches 1200mm, it is very long , but longer product not easy to reach high concentricity requirements. Shbury used CNC machining as method, the use shoulder screws to assembly to CNC turning, finally we made 5 sets of samples received very satisfactory feedback from the customer. Later, the customer continued to place an orders to 200 sets





PART FIVE

PRODUCT
SHOW

CNC MACHINING PARTS WE MADE



Steel machined with orange powder coating



titanium alloy CNC machined



Stainless steel CNC machined



Aluminium CNC machined with anodizing



Aluminium parts with anodizing



Military parts CNC machined



Bicycle gear parts CNC machined



Brass parts CNC machined

CNC TURNING PARTS.



Aluminium CNC turing with nice finishing



Stainless steel turning parts with PVD coating



Aluminium turning parts with anodizing



4140 steel CNC turing



Stainless steel turning parts



Brass bush CNC turning parts



4140 steel CNC turning parts



Aluminium CNC turning parts

SHEET METAL PARTS



Stainless steel sheet Bending cases,
T=2mm



steel sheet Bending parts with
chrome plating, T=2.5mm



steel sheet Bending parts with
rivet nuts, T=3mm



Aluminium punching brackets,
T=1mm



Aluminium sheet Bending cases
with anodizing , T=2mm

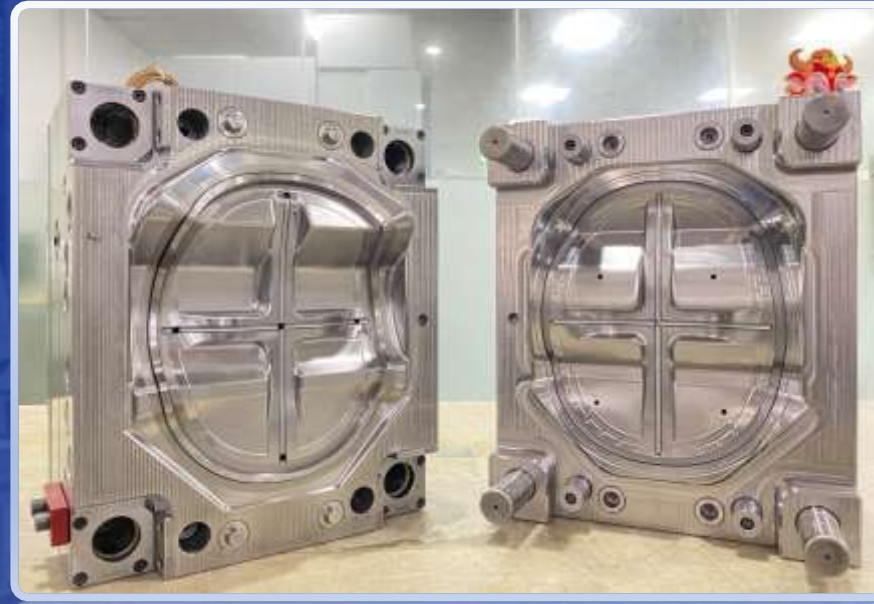


Aluminium sheet bending parts ,
T=2mm

PLASTIC INJECTION MOULD & INJECTION MOLDING PARTS



Shbury has been working as a reputable OEM for multiple industries . For plastic molds and injection molding , we mainly have molds put into mass production on our own , while making exported molds by 30% and shipped overseas client's molding factory . Mainly Auto Interior & Structural , Medical Equipment parts and clean parts ,Home Electrical parts .





PART SIX

EQUIPMENTS




EQUIPMENT LIST-1



Item	Facility Name	place of origin	Model	Machining capacity	Machining precision	Facilities quantity	Mark	Image
1	CNC Center	China mainland,	GDM	1500X1000X300	0.02mm	4		
			VMC850	800X500X450	0.01MM	2		
			Twinhorn VL-850L3	800X500X450	0.01MM	2		
2	CNC Center	Taiwan/Japan	Mitsubishi850	800X500X450	0.01MM	2		
			Mitsubishi	1600X1200X600	0.01MM	1		
			Twinhorn VF-500	500X400X350	0.01MM	2		
			Pollex Maching 600	600X500X400	0.01MM	11		
3	CNC 4axis Machine	Taiwan	DW65	650X450X350	0.01MM	2		

EQUIPMENT LIST-2



Item	Facility Name	Place of Origin	Model	Machining Capacity	Machining precision	Facilities quantity	Mark	Image
1	CNC lathe	Taiwan	ACH-MICK MAC-46	$\leq \phi 160$	0.005mm	8		
2	laser engraving machine	China	N/A	depth 0.2mm	N/A	2	N/A	
3	Laser machine	German		T=0.3mm- 100mm	0.05mm	6	N/A	





EQUIPMENT LIST-2



Item	Facility Name	place of origin	Model	Machining capacity	Machining precision	Facilities quantity	Mark	Image
5	milling machine	China		1000X650X500	0.01MM	3	N/A	
6	grinding machine	China	LMM250	600X350X250	0.002MM	4	N/A	
7	Bending machine	China	/	/	0.1mm	3	N/A	
8	Welding robot	China	/	/				

EQUIPMENT LIST-4



Item	Facility Name	place of origin	Model	Machining capacity	Machining precision	Facilities quantity	Mark	Image
8	injection machining	China mainland, HK, Japan	Logge90T	90T		1	N/A	 
			Chenhsong98T	98T		1		
			Chenhsong138T	138T		2		
			Logge130T	130T		2		
			Chenhsong220T	220T		2		
			Logge500T	500T		1		
			Logge650T	650T		1		
9	EDM		DMSPK1470	1200X600X500	0.001MM	2	Double Head	 
			Mirrordick DM30	600*300*200	0.005MM	2	Mirror EDM	
			Super 448	650X450X350	0.01MM	3		
			DMSPK B30	550X400X300	0.005MM	5		
			Mirrordick AM80	1050*600*400	0.005MM	2	Mirror EDM	

TESTING EQUIPMENT LIST -PART 1.



Item	Caliper	Micrometer	CMM Checking machine
Image			
quantity	Several	3	1
application	To check the usual dimensions	To check the thickness and diameter	To check the complex parts ,and curved surface,tolerance is $\pm 0.005\text{mm}$
Item	Pantone & Raul color card	screw gauge	The two dimension image measuring
Image			
quantity	4	several	1
application	To match the exactly color	To check the threads	To check the Plane dimension,tolerance is $\pm 0.005\text{mm}$

TESTING EQUIPMENT LIST -PART 2.



Item	goniometer	hardmeter	R gage
Image			
quantity	1	1	1
application	To check the angle	To check the soft material's hardness	To check the inside and outside arc
Item	plug gage	height gauge	pin gage tools
Image			
quantity	1	1	several (1-13mm)
application	To check the gap	To check the part height	To check the hole size

PACKING & LOGISTICS

Package



Logistics





THANK YOU

- The Fastest samples time is 24 hours
- The Fastest molds time is 72 hours
- Time is money, Fast custom, Save cost

Vivi Lei

Email: vivi@shburycnc.com